

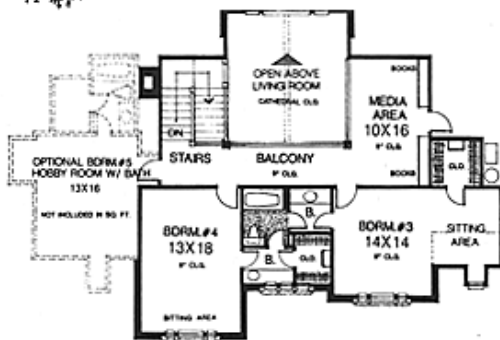
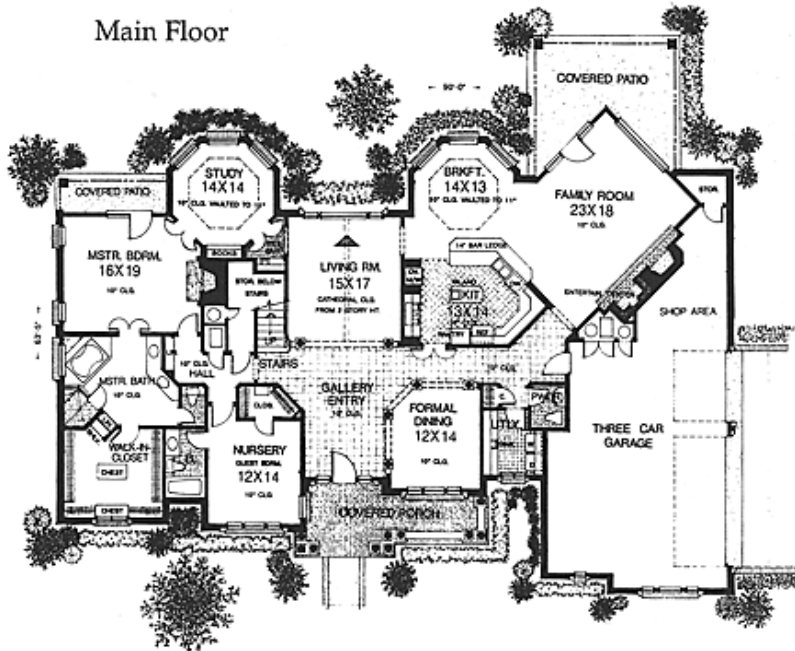


The Portico, built on Lot 2 High Croft



\$ 700,000

Main Floor



Upper Floor

- 4 Bedroom design
- 4500 sq. ft expandable up to 5,000
- Large Master Suite with attached Study
- Three car garage with room for shop
- Open kitchen with wrap around bar top
- Covered porch/patio
- Grand entrance through 'Gallery'
- Balcony over Living Rm
- 1.65 acre lot with Lake view, lake access
- City Water, utilities
- Two bedrooms down
- Traditional Styling

MLS# 3191007



## Lot 2

Lot only Sales Price \$ 142,900



### \$ 20,000 Developer Bonus until June 2010

- Lot 2 High Croft, 1.65 Acres , Lake view, lake access
- Pre-Approved for a 4 bedroom home ( Septic system)
- Electric, gas, CITY WATER, phone, cable available
- 4,000 square foot building minimum
- Home Owners Association, protective restrictions
- Peaceful luxury home neighborhood, quite yet convenient
- Donaldson Road at Cherry Road in Fayette County

MLS# 3190330



### Lot Sales and Information

Andy Stafford, Abr, BC-A  
(901) 596-2431

[IconProps@aol.com](mailto:IconProps@aol.com)

[www.NewConstructionMemphis.com](http://www.NewConstructionMemphis.com)

[www.AndyStaffordRealEstate.com](http://www.AndyStaffordRealEstate.com)

